

### RAVENNA™ WALL-HUNG SEMI-PEDESTAL LAVATORY

- Vitreous china
- Contemporary design wall-hung with semi-pedestal P-trap cover for ease of cleaning
- Rear overflow
- Soap and accessory deck
- Optional with integral mounted towel bar (ordered separately)
- Supplied with mounting kit
- **Design matched to Ravenna toilets** (faucet shown not included)
- Faucet ledge with generous shelf area for accessories

- 0268.444** Faucet holes on 4" (102mm) centers
- 0268.888** Faucet holes on 8" (203mm) centers (shown on rough)
- 0268.144** Center hole only

#### Nominal Dimensions:

24-1/4" x 20"  
(616 x 508mm)

#### Bowl sizes:

19-3/8" (492mm) wide  
12" (305mm) front to back  
6" (152mm) deep

#### Separate Components:

- 0268.004** Lavatory slab 4" (102mm) centers
- 0268.008** Lavatory slab 8" (203mm) centers
- 0268.001** Lavatory slab center hole only
- 0044.000** Semi-pedestal leg

#### Recommended Components:

- 3520.000** Integral Towel Bar  
002 Chrome, 295 Satin Nickel
- 738520-0070A** Towel Bar mounting kit

#### Compliance Certifications:

##### Meets or exceeds the following specifications:

- ASME A112.19.2 - 2008/CSA B45.1-08



MEETS THE AMERICANS WITH DISABILITIES ACT  
GUIDELINES AND ANSI A117.1 ACCESSIBLE AND USABLE  
BUILDINGS AND FACILITIES - CHECK LOCAL CODES.

When used without towel bar and top of front rim mounted  
864mm (34") from finished floor.



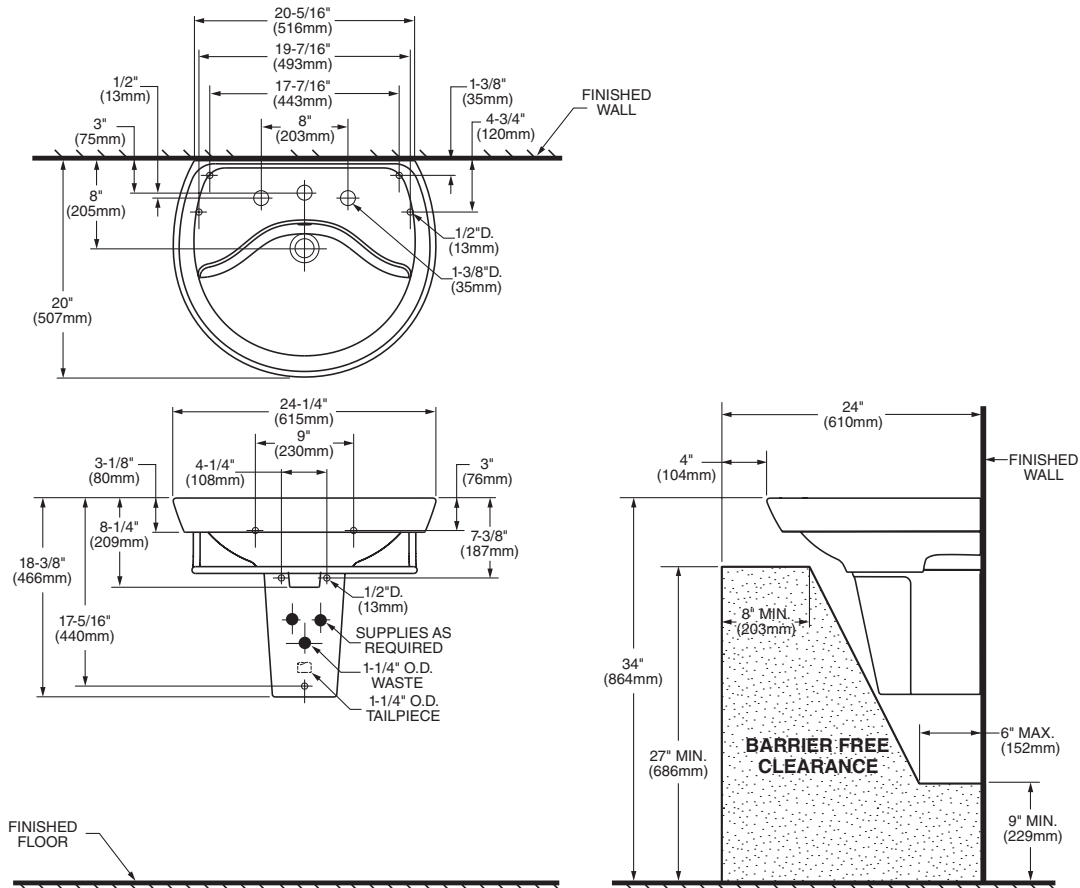
SEE REVERSE FOR ROUGHING-IN DIMENSIONS

#### To Be Specified:

- Color:  White  Bone  Linen  Black
- Faucet\*:
- Faucet Finish:
- Supplies:
- 1-1/4" Trap

\* See faucet section for additional models available

0268.888



**NOTES:**

DIMENSIONS SHOWN FOR LOCATION OF SUPPLIES AND "P" TRAP ARE SUGGESTED.  
PEDESTAL ANCHORING SCREWS NOT INCLUDED.  
SUITABLE FOR REINFORCEMENT ONLY. ACTUAL DIMENSIONS MUST BE TAKEN FROM FIXTURE.  
FITTINGS NOT INCLUDED AND MUST BE ORDERED SEPARATELY.  
PROVIDE SUITABLE REINFORCEMENT FOR ALL WALL SUPPORTS.  
INSTALLATION INSTRUCTIONS SUPPLIED WITH LAVATORY.

**IMPORTANT:** Dimensions of fixtures are nominal and may vary within the range of tolerances established by ANSI Standard A112.19.2. These measurements are subject to change or cancellation. No responsibility is assumed for use of superseded or voided pages.



**MEETS THE AMERICANS WITH DISABILITIES ACT GUIDELINES AND ANSI A117.1 ACCESSIBLE AND USABLE BUILDINGS AND FACILITIES - CHECK LOCAL CODES.**  
When used without towel bar and top of front rim mounted 864mm (34") from finished floor.